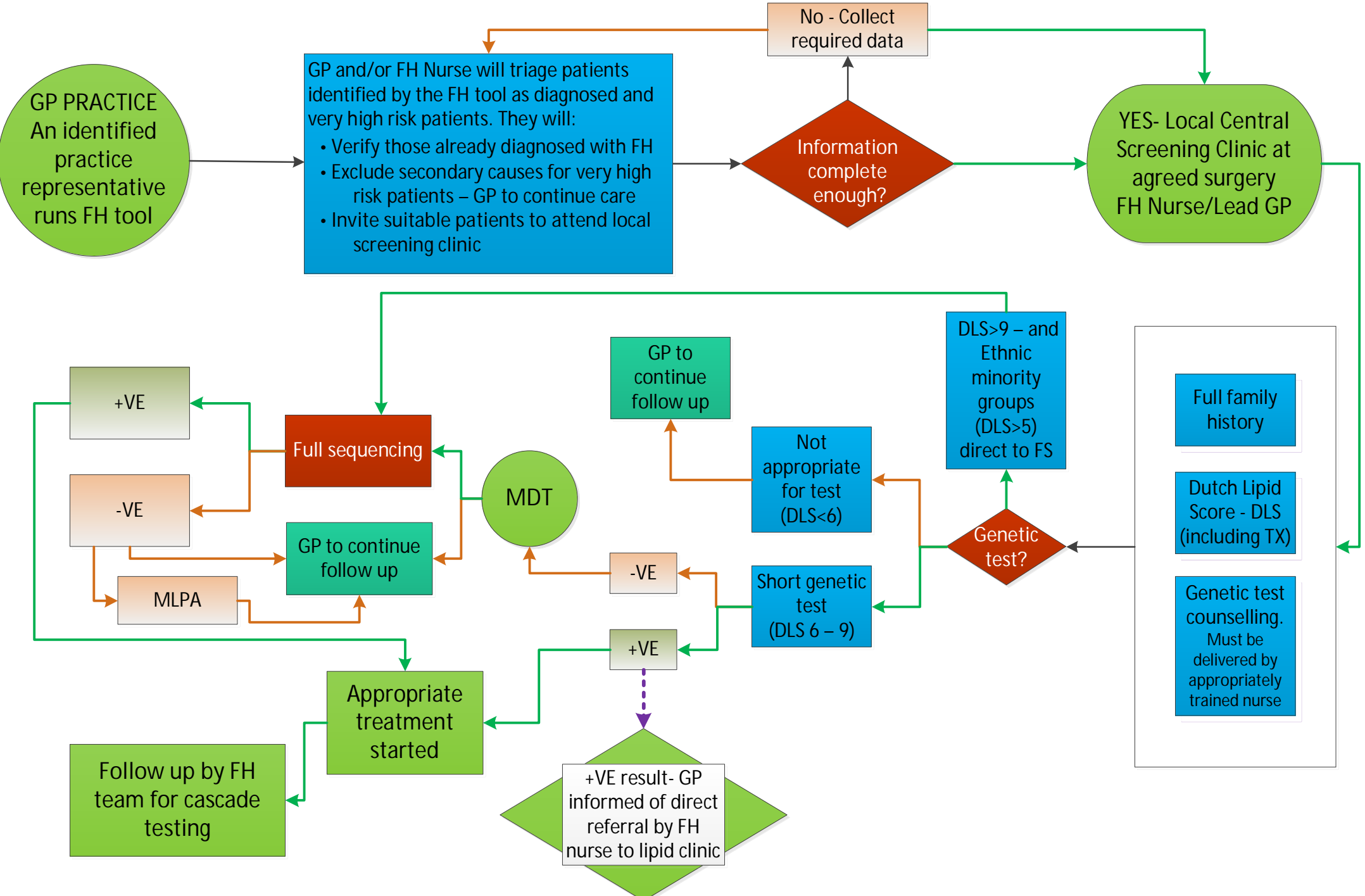
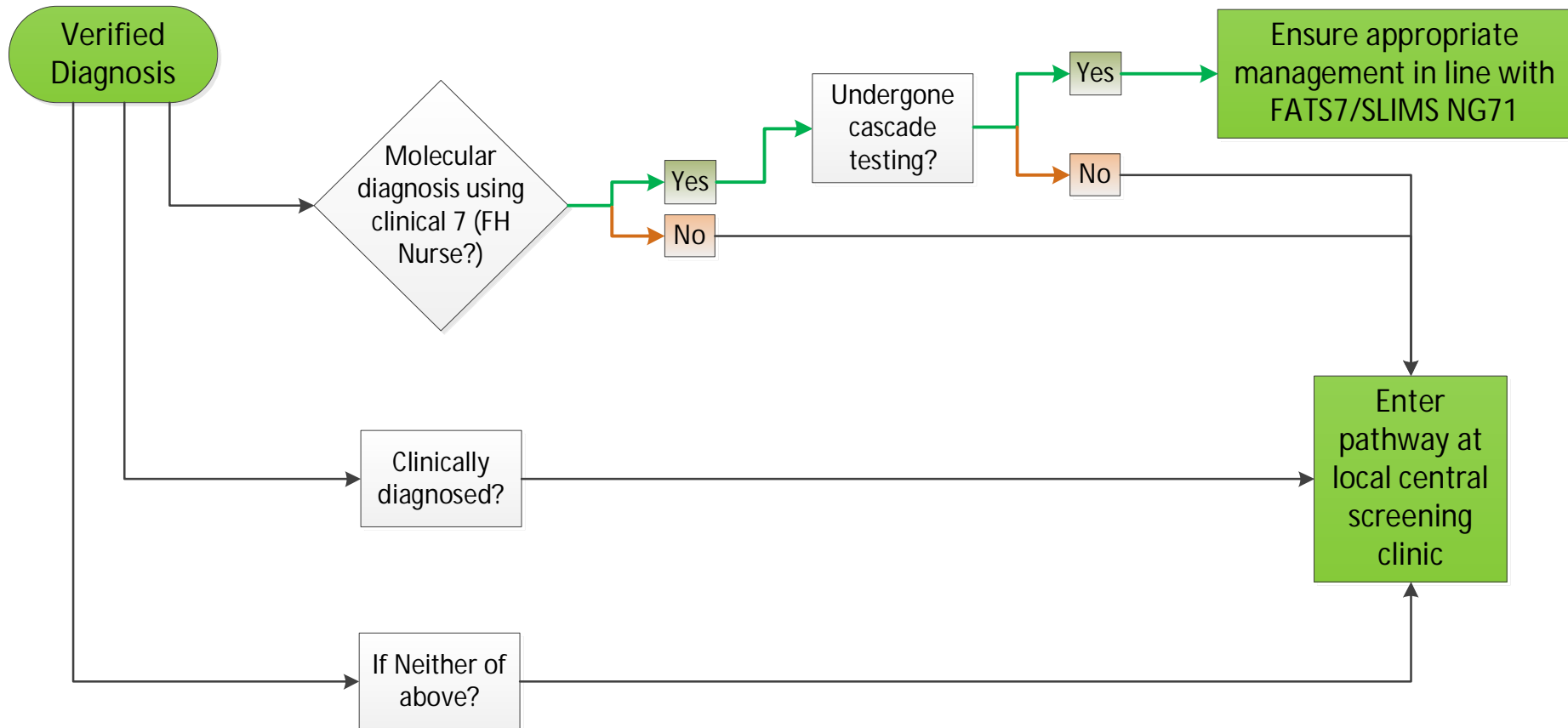


FH Pathway (Oct. 2018)





If there is no LDL use the following calculation: Total cholesterol – HDL – (Triglycerides ÷ 2.2)

Exclude secondary causes/medications for very high risk patients – Refer to FATS7/SLIMS/NG71

Stratify patients going into the pathway by relative risk - Output from PRIMIS Tool

Genetic test counselling must be provided to patients identified on an individual basis by an FH Nurse

Ensure patient has consented for pseudonymised data to be used within the project